

SIXTH FORM · ENRICHMENT 2024 - 2025



BELIEVE · ACHIEVE · SUCCEED · EXCEED

## ENRICHMENT OPTIONS

EPQ	4		
MOOCs	5		
T4T	6	Further Mathematics	15
Gold DofE	7	Whitbread Rugby Academy	16
The Society	8	Whitbread Football Academy	17
Subject Ambassadors	9		
Equality & Diversity Group	10	Saracens Mavericks Netball Academy	18
Debate Club / Model UN	11		
ECO Schools ECO Committee	12		
Public Relations Committee / International Development Committee Tech Crew	13	<u>ADDITIONAL ENRICHMENT OPTIONS</u>	
		Performing Arts	19
Local Community Committee	14	Sport	20

Samuel Whitbread Academy, Shefford Road,  
Clifton, Shefford, Bedfordshire, SG17 5QS

SWA Sixth Form Advice Line: 01462 628059

[www.samuelwhitbread.org.uk](http://www.samuelwhitbread.org.uk)



## Sixth Form Enrichment Options

At Samuel Whitbread, we believe that it is vital for all students to have the opportunity to extend their studies through Enrichment. Some of this is in the shape of timetabled lessons and some of it happens after school. In all cases though, as well as being interesting and fun, the objective of Enrichment is to give you the opportunity to develop your skills and learning, and to enhance your CV in the process. Over and over again, employers and universities are telling us that they are looking for applicants who have that 'certain something' that makes them stand out from the crowd in an increasingly competitive world. Through the Enrichment programme, you will be given 'the edge' over others, to give you the competitive advantage that helps you towards the next steps in your education and/or career. All students are expected to take part in an enrichment option apart from those already taking the Rugby, Football or Netball courses or Further or Additional maths.

For any queries about Enrichment, please see Dr J Haynes Head of Enrichment or email at [jhaynes@bestademies.org.uk](mailto:jhaynes@bestademies.org.uk)

[www.samuelwhitbread.org.uk/Sixthform/Enrichment/](http://www.samuelwhitbread.org.uk/Sixthform/Enrichment/)



# EPQ

## The Extended Project Qualification

The EPQ is available to students with an APS of 6.7 or above. It allows students to investigate one area of their own interest in much further depth and involves choosing a topic and carrying out research into a defined area of study, supported in small groups by a supervisor. This is then backed up with a programme of taught skills sessions to enable successful completion of the project. There is no exam but students produce either a dissertation-type essay or physical product together with a shorter report and is handed in at the end of Year 12.

The choice of topics is pretty much unlimited – you could choose to extend your studies in one of your current A levels, or combine elements of more than one of them. Alternatively, it could be an area that we do not cover in this school – past examples include Archaeology and Classical Civilisation – or it could be about something from outside of school, an ethical issue perhaps, or something that affects you personally or that you care about, or just something that you want to find out more about. However, it cannot simply be re-hashing current or past work. All work is scanned for plagiarism, just as it is at university.

The EPQ is all about the researching and developing of work, as well as actually producing it, so that you can reflect on your journey of learning that you have undertaken, regardless of what the actual result is. It is well regarded by both universities and employers alike since it provides a raft of skills that are required post-secondary school and demonstrates a good degree of initiative. EPQ is worth half an A Level at A2 standard (ie more UCAS points than an AS!).

### Key Features

The Extended Project is highly regarded by Universities as a major benefit to students preparing for the challenges of individual study. Increasingly, universities are also making alternative or differentiated offers based on the EPQ and/or are making it part of their entry requirements. Key to this is academic research that can focus on contemporary issues that have real relevance and significance to the lives of our students and areas of academic interest that they themselves would like to develop and explore.

Moreover, EPQ strives to

- Add value that can be put onto UCAS personal statements.
- Encourage thinking across specialist subjects.
- Develop students' ability to make inferences from data, images and documentary sources, to argue a case and draw reasonable conclusions.
- Foster enquiry and critical thinking about interconnecting issues.
- The skills of communication, problem-solving and reasoning skills, analysis and evaluation.

### Useful links

<http://www.aqa.org.uk/subjects/projects/aqa-certificate/EPQ-7993>

<http://university.which.co.uk/advice/personal-statements/epq-extended-project-qualification-personal-statement-top-tips>

<http://www.dailymail.co.uk/news/article-2389514/Extended-Project-Qualification-A-level-pupils-5k-word-dissertation-place.html>

[http://www.dailyecho.co.uk/news/education/13584079.Sharp\\_rise\\_in\\_students\\_with\\_the\\_EPQ\\_option/](http://www.dailyecho.co.uk/news/education/13584079.Sharp_rise_in_students_with_the_EPQ_option/)

<http://www.bbc.co.uk/news/education-33819871>



# T4T

## Teachers for Tomorrow

In the Teachers for Tomorrow programme (T4T) you will be working alongside a teacher to specifically help individuals with their learning. You would have to work with them to see where you have free lessons available so that you can get some regular time in with a particular class. This is a great opportunity for anyone thinking of entering the world of teaching, to see both the joys and the trials of getting ideas across to younger minds!

It does however require some regular commitment from you! It is an ideal opportunity to see matters 'from the other side' and to get a taste of some of the rewards and the challenges of work in the education sector. You will not be expected to do the teacher's work for them, but you will get the opportunity to work alongside them, to try out ideas, to help individuals with their learning and to be guided by the teacher about ways that you could implement ideas and help with the progress of others.

You will be filling out a logbook of your work over the course of the year and (hopefully!) you will be able to reflect and see how you have progressed during this time. You will have the opportunity to talk through your work with the teacher you are working with and also you will have regular review sessions with the Head of Enrichment, Dr Haynes.



This is a wonderful opportunity for you not only to learn some of the skills of the trade but also to really enhance your CV and to stand out from the crowd, showing that you have the initiative if you want to get onto a certified teaching programme, the competition for which is becoming increasingly fierce.

# Gold DofE

## The Duke of Edinburgh's Award



***“The Duke of Edinburgh’s Award has helped countless young people on their sometimes difficult path to adulthood.”***

*HRH The Duke of Edinburgh, KG KT*

You can carry out the Gold D of E at SWA even if you have not carried out the previous levels, it may just take you a little longer. The expeditions take place in June/ July in Year 12. If you enrol during Year 11 and you do NCS you can use this as the residential section of the award. For the past seven decades, the Charity has inspired and transformed the lives of millions of young people from all walks of life. From volunteering to physical activities, life skills to expeditions, achieving a DofE Award is a passport to a brighter future, valued by employers and universities.



The D of E programme is well-established here, at all levels. We have had a student have a (downwards) revised university offer made to her on account of her gold DofE award!

Activities for each DofE section take a minimum of one hour a week over a set period of time, so they can be fitted in around academic study, hobbies and social lives. Development and regular progress must be shown and all activities must be completed by the participant’s 25<sup>th</sup> birthday.

### **Gold timescales:**

Volunteering section: 12 months

Physical and Skills sections: One section for 12 months and the other section for 6 months

Expedition section: 4 days/3 nights

Residential section: Undertake a shared activity in a residential setting away from home for 5 days and 4 nights.

If you didn’t do Silver, you must undertake a further 6 months in either the Volunteering or the longer of the Physical or Skills sections.

You must be 16 years old.



Follow the link below for more information

<http://www.dofe.org/>

School contacts: [cbonham@bestacademies.org.uk](mailto:cbonham@bestacademies.org.uk) and

[bbonham@bestacademies.org.uk](mailto:bbonham@bestacademies.org.uk)

# The Society

Over recent years, Samuel Whitbread has enjoyed considerable success with applications to Oxford, Cambridge and other Russell Group Universities with students consistently being offered interviews. This year we had successful students taking places at Oxford, Cambridge and other Russell Group Universities. For some of our most academically able students, an application to Oxford, Cambridge and other Russell Group Universities is the right choice to help them deepen and enrich their intellectual study. We take our responsibility to help prepare all our students for entry to University seriously and this includes our specific provision for those who wish to make an application to Oxbridge. It is worth emphasising that our provision is inclusive, and those even remotely considering application should take advantage of what is on offer since it will help strengthen their application to other, highly competitive institutions. The outline below gives a flavour of the extent of our provision.

The Society programme begins in the autumn term of Year 12 when we gather our cohort of potential applicants. Students are invited to join the Individual Learning Programme (ILP) where they are tutored in

their prospective speciality. Each student receives a tutorial with preparation guidance individually suited to their needs. Tutorial-style sessions and a series of lectures take place and this may lead to students being asked to read more widely and tackle more demanding problems to help extend their knowledge and understanding. Towards the end of the Summer term in Year 12, students are guided towards some extended project work in consultation with their tutor and this helps to provide them with first-hand experience of independent research. Alongside this support, students have mock interview practice organised by senior staff along with staff from specific subject areas at regular intervals prior to the actual interviews in December of the Year 13.

Preparation for Oxbridge and Russell Group is a demanding endeavour for our students however students report that it gives them skills that are globally useful in higher education and in their chosen careers.

**For more details or enquiries, please contact the Joint Heads of The Society via email: [SWA-Thesociety@bestacademies.org.uk](mailto:SWA-Thesociety@bestacademies.org.uk)**





# Subject Ambassadors

A Subject Ambassador is a key role within the Sixth Form. Becoming an ambassador not only enables you to undertake a personal fulfilment but also enables you to use this experience on future applications to help you stand out from amongst the rest.

Please see the below requirements of a Sixth Form Subject Ambassador.

## Requirements of a Sixth Form Subject Ambassador

1. Select one of your A level/BTEC courses that you are really passionate about and speak with the department teachers about becoming a subject ambassador.
2. 12 hours of support in year 9, 10 and 11 lessons where appropriate, or attending after school events over the year.
3. 4-6 hours of department based work over the year. This could be through various activities e.g display boards, development of resources, helping organise house competitions for the department etc.
4. Evidence of 2 and 3 above will need to be submitted by the department in which the student is a subject ambassador. The evidence of hours needs to be submitted to Mrs Hoad.



Geography ambassadors creating display boards with Mr Sahai.

## What are the benefits to you as a student?

- Personal satisfaction in helping others.
- Playing an active role in the improvement of teaching, classroom resources and the development of your passion in the subject in which you are an ambassador.
- You will receive a formal certificate from the Sixth Form as a record of achievement.
- You can use this experience in future applications to university, apprenticeships and jobs.

# Equality and Diversity Group



At Samuel Whitbread Academy we take the value of Equality very seriously. We want students to be a central part of our push to improve understanding and attitudes on issues surrounding equality and diversity in this country and in this school. This group would allow you work with experts in the school to achieve this aim. You would be developing skills and knowledge that would develop your own, and others understanding, of issues linked to Equality and Diversity in our school and our society today. Involvement in this group would provide valuable experience that could be added to your applications for UCAS, apprenticeships, or for future employment.

**Researching and presenting:** We would like you to be involved in researching and presenting information about Equality and Diversity through film-making, assemblies, presentations and displays.

**Taking a lead:** You will be working with other year groups to help lead and guide them in their actions researching and promoting Equality and Diversity in this school, and beyond.

**Providing a solution:** Through the student body working together and educating each other, could some solutions be found to change attitudes in the school or beyond?

**Cultural heritage workshops:** You can be involved in helping to run and organise cultural heritage workshops run at the school by Sharon DeLeonardis of SpectaculArts.

<https://www.spectacularts.co.uk/>

We meet in Student Services on a Tuesday lunchtime. School contacts: [ybrown@bestacademies.org.uk](mailto:ybrown@bestacademies.org.uk) or [jhaynes@bestacademies.org.uk](mailto:jhaynes@bestacademies.org.uk)

# Debate Club



This enrichment option will give you the opportunity to get involved in organising and participating debate competitions within SWA, but also on a bigger scale, amongst the BEST schools, as well as international debates. If you become part of this group you will have a number of clear experiences of organisation, research, mentoring and team working skills that take you beyond those in the classroom.

**Organisation:** you will be part of a team setting up and establishing a debate competition between different local schools, there will also be the option of getting involved with the interschool and international debates that SWA is involved in.

**Teamwork:** You will be required to use your own initiative, but work as part of team to put structure and set up the competition, but also work with both staff and students in lower years of the school to bring the final product together.

**Mentoring:** As part of this group you will be mentoring those in lower years in SWA and possibly other BEST trust schools – not only to organise the structure of the debate, but to think of relevant topics, help with creating resources to help tutor groups and other schools to get involved.

**Research:** You will have the chance to work on topics that are controversial and subject to current debate. This will allow you to further develop your knowledge and understanding of current affairs as well as engage in lively discussions and debate.

**Articulation and discussion:** Whether you are a confident speaker or would rather organise and research behind the scenes, this option will allow you to articulate your ideas and arguments, and base your views on examples - a useful skill for many A levels – and a chance to practise it in regards to something you have a really strong opinion about !

**For more details or enquires, please contact Dr Haynes via email:**  
[JHaynes@bestacademies.org.uk](mailto:JHaynes@bestacademies.org.uk)

**Both Debate Club and Model UN Meeting in 426 on Thursday lunchtimes.**

# Model United Nations



Model United Nations runs alongside Debate Club, this year we are organizing a House Model United Nations Competition at Samuel Whitbread Academy.

Model UN simulations engage hundreds of thousands of students each year, helping them to learn more about the principles of the UN and how it functions. Many of today's leaders in law, government, business and the arts, participated in Model UN as students. Model UN is a simulation of the United Nations where students play the role of delegates from different countries and in this role, attempt to solve real world issues arguing their case from the perspective of their assigned country.

**Events:** You would be involved in organizing a House competition at Samuel Whitbread on 10th - 14th February, and an inter-school event for BEST, Bedfordshire and Hertfordshire schools on Monday January 27th.

For more details or enquires, please contact Dr Haynes via email:  
[JHaynes@bestacademies.org.uk](mailto:JHaynes@bestacademies.org.uk)

# ECO Schools ECO Committee

## Content and Aims

The Eco schools programme is a nationally recognised and run programme to support schools in achieving a greener future. We have achieved our Green Flag Award after an excellent track record of green projects. We aim to continue our progress by competing in national competitions of an Eco theme.

Students from all year groups get involved as little and as much as they want, but we can offer sixth form students a chance to be Eco Project Managers and Eco Journalists. This involves taking a project and managing it to fruition. You will be given advice on how to run and manage a project, pick the eco project you would like to achieve and experience leading a team of students to achieve your goal. During the time spent managing your project you will gain skills in project management, leadership, expert communication with students and teachers, understand the environment and ways to solve the problems currently facing it. These projects also link into Project EarthShot run by Sir David Attenborough and HRH Prince William, the Duke of Cambridge. We produce a fortnightly publication as well as marketing what we do on social media platforms. You can take a lead in these public relation roles if this is your forte and be a reporter, editor or PR champion.

All the roles you undertake will offer you many transferrable skills and lots of experience to talk about in your UCAS application and university or apprenticeship interviews. This experience will offer you something incredible that will put you a step up from the competition.

School contact: [jambrose@bestacademies.org.uk](mailto:jambrose@bestacademies.org.uk)

## Key Features

- Transferrable skills applicable to all industries and careers:
- The chance to make a difference and influence the schools eco future
- Journalistic skills
- Editorial skills
- Project management skills

## Career Considerations

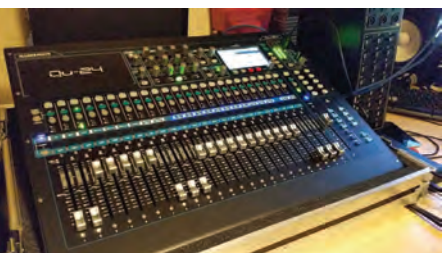
- Project management
- Leadership
- Environmental Sciences
- Journalism
- Social Media PR
- Biological sciences

# Public Relations Committee



Work with the Sixth Form leadership team and the school student leadership group on promotions of the school and Sixth Form to ensure a more interactive and accessible experience can be gained with information shared about the school and Sixth Form. Media is a key emphasis here to promote and allow the community to visually experience and learn about SWA. A great opportunity to also develop in school work experience related to media and public relations via video promotions.

For more details or enquires, please contact Mr Tonking via email: [CTonking@bestacademies.org.uk](mailto:CTonking@bestacademies.org.uk)



# Tech Crew

The Tech Crew enrichment will give students the opportunity to support the technical aspect of SWA shows and musicals. Along the way you will learn all about our lighting and sound equipment as well as fixing potential faults. As older students you will be role models for the younger members of tech crew and will have the chance to pass on your knowledge to them. This is a great way to build transferrable skills such as teamwork, leadership and logical thinking.

For more details or enquires, please contact Mr Osborne via email: [gosborne@bestacademies.org.uk](mailto:gosborne@bestacademies.org.uk)

# Local Community Committee

To create and work on closer links to organisations in our local community such as:

1. Care homes/nursing homes
2. Police
3. Fire service
4. Religious communities/churches
5. Any other community groups students would like to link with



Widening SWA students access to the local community assists with student's personal and cultural capital development in prep for after sixth form. We have a local residential home who would like to work with students from the school, giving residents the opportunity to talk about and share their experiences, and possibility recording them to help educate others.

# Further Mathematics

## Content and Aims

In conjunction with A level Mathematics students can take Further Mathematics. Students can choose Further Mathematics as part of their enrichment in the Sixth Form. Although the course can be taken as a 2 year A level course, students will sit an AS qualification at the end of Year 12 and can then decide not to continue with their study of Further Mathematics in Year 13.

**Further Pure**– extends knowledge of pure mathematics from the A level Mathematics course and introduces fresh themes including matrices, complex numbers, hyperbolic functions and polar coordinates.

**Applied Mathematics**- students will be introduced to decision mathematics, where students will be using algorithms to solve problems applied to business and finance. The mechanics section will build on Newtonian physics of the A level Mathematics course, and introduce students to mathematical modelling of the real world.

## Key Features

The course counts as a timetabled A level option. We expect students to be independent workers, especially in exam question rehearsal. This is an extremely challenging course aimed at very good Mathematicians.

## Career Considerations

Further Mathematics at A level is a much sought after qualification. Many of the more traditional universities consider this as an essential course if you wish to study Mathematics, Engineering or the Pure Sciences.

## Student Quote

***“Throughout Year 12 and 13 the devotion of the teachers and the standard of teaching was exemplary and my knowledge from A level Mathematics and further Mathematics has provided an excellent foundation for further study.”***

**Mr K Wray**  
**Edexcel**

## SUITABILITY

- APS 6.1
- Grade 8 in GCSE Maths
- Pass the entry exam
- Further Mathematics can only be studied by a student taking A level Mathematics. Everyone wishing to study Further Mathematics will be interviewed on application

## EXAMINATION & ASSESSMENT BREAKDOWN

- 100% external examination

# Whitbread Rugby Academy

## Content and Aims

Students who wish to be part of the Northampton Saints Rugby Development Course will be able to choose this as an enrichment as well as their 3 A level or BTEC courses. The Rugby course lasts two years and runs alongside their studies, allowing them to “live like a professional rugby player” whilst doing their studies. We have weekly competitive fixtures and an expectation to do well in the NatWest National Cup Competition, and the students on this course will be able to gain plenty of match experience during their time at Samuel Whitbread. They will have extra training sessions delivered to a high standard from Northampton Saints Academy and DPP head coach, Edd Rhodes consisting of mentoring and Strength and Conditioning programs specifically designed for rugby players and nutritional advice. To participate in the course students must reach the demands of the entry requirements of the courses they select alongside rugby. The standard entry for the sixth form is required to join this course.

## Key Features

- Students will have access to excellent coaching from Level 3 Rugby Coach Edd Rhodes (Northampton Saint Academy coach and Head coach for Bedfordshire DPP).
- Students will have opportunities to progress with the Northampton Saints, East Midlands and many other Championship Clubs.
- Students will have opportunities to complete RFU refereeing and coaching qualifications.
- Students will have various volunteering opportunities at local schools and club events to gain experience and improve their CV.
- Students will have Gym programs designed for optimizing performance on the rugby pitch.
- Greater understanding of a professional sport and expectations of a student athlete.

## Career Considerations

This rugby course will enable students to sit 3 A-Levels or BTEC courses whilst receiving expert coaching. Opportunities to progress rugby career with various Premiership, Championship and National League rugby clubs as well as East Midlands and County representative sides. We also aim to give the students volunteering opportunities by getting them to organise and run lower and middle school rugby events, refereeing in local tournaments and matches and assist with coaching the younger age group rugby teams at the school. By passing the other A levels selected, students will have access to further education or employment. We have developed strong links with some of UK’s top universities to assist in taking the next step in education.



## Mr D George

### SUITABILITY

Candidates for this course will need to have a strong understanding of rugby and be playing to a high level. They will be expected to be representing the school team with an attitude to constantly raise standards for yourself, the team and the wider Samuel Whitbread community. The rugby course will be extremely demanding and students will be pushed very hard. Students will need to be able to challenge themselves and will need a very good work ethic. Students will have fitness tests on a regular basis and will be required to show improvements throughout the course.

If you would like any more information please visit the [Whitbread Rugby](http://Whitbread Rugby website) website. If you have any questions please contact us at [swa-rugby@bestacademies.org.uk](mailto:swa-rugby@bestacademies.org.uk)



# Whitbread Football Academy

## Content and Aims

Students who wish to be part of the Samuel Whitbread Football Academy will choose this as their 4th option in Year 12. This course will give the players the opportunity to experience the life of a professional football player whilst completing their studies. They will have extra training sessions delivered to an elite & professional level from our highly qualified UEFA coaches that have experience of playing at a high level.

As part of the programme students will be working on vital areas of the game such as strength & conditioning, tactical, technical & also gain nutritional advice.

To participate in the course, students must reach the demands of the entry requirements of the courses they select alongside Football. The standard entry for the sixth form is also required.

## Key Features

- Students will have access to excellent UEFA qualified coaching.
- Students will have opportunities to progress within the semi-professional / professional game.
- Students will have opportunities to go to America on a scholarship with the links Samuel Whitbread have, providing the work is put in both academically and on the football side.
- Students will have opportunities to go onto university with a much better chance of representing a top level sporting university.
- Students will have various volunteering opportunities with Samuel Whitbread to gain experience and improve their CV.
- Extensive football fixtures in AOC leagues and national competitions.
- Students will have the opportunity to complete an FA Level 1 coaching badge and The FA referee course qualification.
- Regular match analysis using the HUDL platform, with individual player access

## Career Considerations

This football course will enable students to sit 3 A-Levels whilst receiving professional level coaching. By passing the other A levels selected, students will have access to further education or employment. We also aim to give our students the opportunity to begin their own coaching journey if they wish. This will include opportunities to organise lower and middle school sporting events, referee in local tournaments and matches and assist with coaching the younger age group Football teams at the school.



## Mr J Goldman

### SUITABILITY

Candidates for this course will need to have a strong understanding of Football and be playing to a high level. They will be expected to be representing their school team as well as playing Football outside of school. The Football course will be extremely demanding and students will be pushed very hard. Students will need to be able to challenge themselves and will need a very good work ethic. Students will have fitness tests on a regular basis and will be required to show improvements throughout the course.

If you would like any more information please visit the [Whitbread Football website](http://Whitbread Football website). If you have any questions please contact us at [swa-football@bestacademies.org.uk](mailto:swa-football@bestacademies.org.uk)

# Saracens Mavericks Netball Academy

## Content and Aims

Whitbread Netball Academy is a unique part of the 6th Form and we are delighted to offer an outstanding educational programme combining first class academic options with a high-performance netball development programme.

Our netball programme is aimed at female students 16 years old and above. Students can study any combination of A-Levels or BTEC courses and are ultimately able to create their own unique education program whilst playing and training at a high level and becoming one of our highly esteemed student athletes.

The Netball Programme continues across two years with students able to work on their personal game; their knowledge and understanding of the game and train and play at a high-level with other like-minded student athletes, all whilst receiving high quality teaching and learning in an outstanding sixth form.

The aim of the programme is to progress through county and regional tournaments to the national competition each year. The programme offers regular fixtures as students play regular games against (including but not limited to), local opposition, the AOC British Colleges East Region League and the Sisters N Sport national competition. Each player will be encouraged and mentored by the lead coach who will design and deliver specific training programmes to get the student into peak netball performance condition.

Students must firstly meet the standard entry requirements of the 6th Form and must also meet the demands of the entry requirements of the courses they are applying for. Students wishing to apply for the netball academy must tick the box on their SWA application form.

## Key Features

- Students will have access to excellent coaching from an England Netball UKCC Level 2 Qualified Coach.
- Students will have the opportunity to gain their England Netball INTO Umpiring C-Award Qualification and their Level-1 Coaching Qualification
- Students will train for a minimum of four hours per week and play a minimum of one game per week
- Students will have the opportunity to attend netball workshops, guest speaker workshops and professional netball games
- Student will have various volunteering opportunities at school and other local school and club events to gain experience and improve their university application and/or CV
- Students will have individualised player development programmes and strength and conditioning programs designed for optimizing performance on the netball court.
- Students will gain a greater understanding of high-performance sport whilst being part of a positive environment

## Career Considerations

The netball course will enable students to sit their A-Levels or BTEC qualifications whilst receiving expert coaching. The opportunities to gain further umpiring and coaching qualifications as well as volunteering opportunities will enable the students to further their education outside of their course, provide the opportunity for paid employment and will also help bolster the student's university application and/or CV leading to greater opportunities.



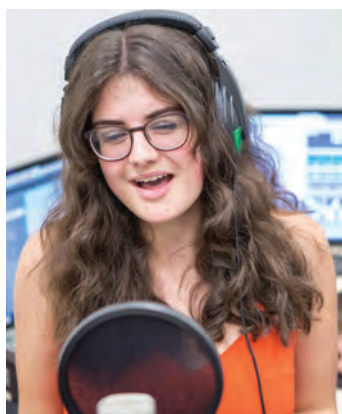
**Mrs A. Skinner**

## SUITABILITY

Candidates for this course will need to have a strong understanding of netball and be playing at a high level. They will be expected to represent their school team as well as play netball outside of school if their schedule allows. The netball course will be both challenging and physically demanding with students being pushed hard. Students are required to commit to pushing themselves and will need a strong personal work ethic. Students will need to be able to balance the demands of a high-performance netball programme and their studies and show improvements throughout these courses.

If you would like any more information please visit the [Whitbread Netball](http://Whitbread Netball) website. If you have any questions please contact us at [swa-netball@bestacademies.org.uk](mailto:swa-netball@bestacademies.org.uk)

# Performing Arts



Big Band, Soul band, Choir, Percussion club, instrumental lessons are just a small selection of what the music department has to offer. With termly concerts and musicals and trust wide shows and performances the music department has something for everyone. Rehearsals happening every day at lunchtime and after school, everyone is welcome and we look forward to seeing you join us!

**Please see Miss Meadows, Head of Music for further details.**



With plays and musicals being staged over the course of the year, there are opportunities for not only performers but also for those behind the stage, be that lighting, sound, set design, make up or stage management. We have regular rehearsals for those both on and off stage and provide an opportunity for everyone to learn something new.

**Please see Miss Meadows or Mrs Keen, Head of Drama for more details.**



The Easter Dance Show and Summer Arts Festival are also perfect events to show off your dance skills. There are clubs for different abilities, year groups and styles. There is also the opportunity to become a Dance ambassador for SWA. Dance Ambassadors support the Dance dept with activities such as supporting Year 8 Open Evenings, Year 9 Options Evening by talking to students and parents. They also support year 11 students in lessons with their practical coursework and lead Year 9 Dance club. The ambassadors are active members of the dance company, performing at school events and choreographing routines for the school musical.

**Please see Miss Major, Head of Dance for further details.**

Taking part in such opportunities is not only fun, but also gives you something concrete to write about in your Personal Statement and enhance your CV for whatever path you choose to follow post school.

# Sport



There are a number of sporting opportunities available to Sixth Form students. There are regular lunch time and afterschool clubs available for all years to participate in including Netball, Football, Rugby, Basketball, Dodgeball, Trampolining and many more.

We aim not only to nurture our future elite sportsmen and women but also to develop the potential of all those who enjoy sport. There are opportunities to train the Year 9, 10 and 11 teams alongside PE staff developing coaching techniques and enabling you to work towards coaching qualifications in a number of sports.



Additionally, during the Sixth Form you will be able to organise House games and competitions for the whole school, like Harwood's successful Wimbledon competition which has been running and fundraising for the last few years.

As well as building personal fitness levels and having fun along the way, sport is an ideal way to develop team building and leadership skills along with giving yourself material to enhance your CV. Throughout the year there are regular events, matches and training that occur in a wide variety of disciplines – for further details please see **Mr Hart, Head of PE**, take a stroll down the PE corridor to look at the clubs and fixtures boards or visit the Twitter page [@SamWhitPE](https://twitter.com/SamWhitPE).

