

# Theatre presentation

2.00 Surnames A-L

2.30 Surnames M-Z



# Sixth Form Personal Development, Organisation and Independent Learning

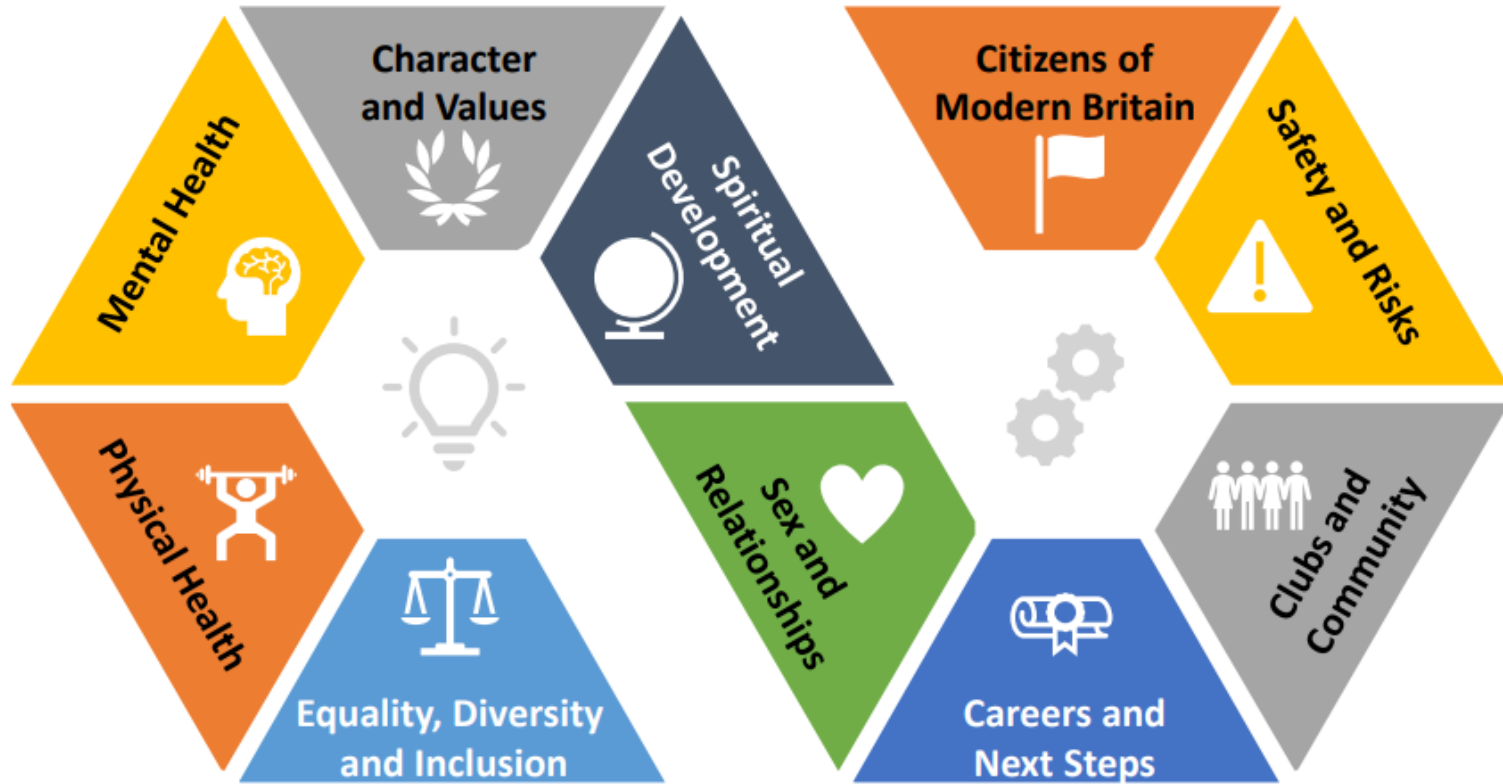


Mr Huckle

Head of Sixth Form



# Personal Development at Samuel Whitbread



## Our Core Mission

At Samuel Whitbread Academy we strive to develop healthy, resilient and independent learners, who read confidently for both learning and pleasure, and who participate in culturally enriching and diverse experiences.

A row of seven small, colorful posters, each representing a core value. Each poster has a title, an icon, and several bullet points or phrases.
 

- EQUALITY**: Icon of a lightbulb. Phrases include 'ACTIVELY PARTICIPATE', 'SHARE IDEAS', 'CONSIDER OTHERS', 'RESPECT', 'ACHIEVEMENT'.
- TEAMWORK**: Icon of people. Phrases include 'WORK TOGETHER', 'SUPPORT', 'ACHIEVE'.
- INTEGRITY**: Icon of a person. Phrases include 'BE HONEST', 'BE PROUD OF YOUR WORK', 'SHARE YOUR WORK', 'SUPPORT OTHERS'.
- DETERMINATION**: Icon of a person. Phrases include 'BE FLEXIBLE & ADAPT', 'THINK ABOUT WORKING', 'SHOWING RESILIENCE', 'TRY SOMETHING NEW'.
- INGENUITY**: Icon of a person. Phrases include 'IMAGINE', 'CREATE', 'PROBLEM SOLVING', 'TRY SOMETHING NEW'.
- EMPATHY**: Icon of a person. Phrases include 'UNDERSTAND OTHERS', 'BE PROUD OF YOUR WORK', 'SHARE YOUR WORK', 'SUPPORT OTHERS'.
- RESPECT**: Icon of a person. Phrases include 'GIVE OTHERS PEOPLE THE OPPORTUNITY TO LEARN', 'LISTEN', 'SHARE YOUR WORK', 'SUPPORT OTHERS'.



# The Sixth Form Alliance

## Alumni

Inviting back alumni students to speak with our students from a wide variety of destinations: universities, apprenticeships and jobs



## Universities

Inviting in Universities to speak with our students: Russell Group and Local.

University visit and taster days: University of Hertfordshire and Bedfordshire.



Inviting in local, national and international employers to speak about future options.

## Employers



Inviting in parents/carers to speak with students about their pathways to different careers.

## Parents/Carers



Inviting in apprenticeship providers to advise and guide on apprenticeships: FCDO, MBDA, Unilever, Specsavers, Glaxo, Network Rail.

## Apprenticeship Providers

# Form time 8.20am every day



## Example:

Monday	Planning the week ahead; prioritising; targets
Tuesday	Taskmaster competitions
Wednesday	PSHE e.g. Drug and Alcohol risks
Thursday	Assembly
Friday	Passion Project

## Sixth Form Organisation - Equipment and Resources for Sixth Form Study



Below are the resources students need to ensure they have sources ready for lessons to commence in September. Organisation is vitally important in the Sixth Form across all courses that are studied and it is a requirement that students attend with all resources required to ensure smooth progress can commence.

1. **Lever Arch Files** - at least one per course in the first instance. We would advise two per course as detailed written notes will be made in each course along with extensive resources being supplied.
2. **Dividers** - for the folders to divide into units of study.
3. **Normal classroom pencil case equipment - Pens, pencils, rulers, rubber, tip-ex, glue etc.** Teachers will not lend equipment in the Sixth Form
4. **Pad of lined paper** - to make extensive written notes during lessons and in private study time. Most courses in the Sixth Form do not use exercise books.
5. **Calculator** - most courses in the Sixth Form include an element of maths/stats.
6. **Hole punch** - to ensure you can keep resources in the same folders as your written notes.
7. **Stapler** - to ensure you can staple resources for lessons together
8. **Highlighters** - one aspect of Sixth Form study is extensive reading - you will need to highlight as part of the note-taking process.
9. **Required resources from the Sixth Form Independent Learning Guide:**  
[https://www.samuelwhitbread.org.uk/site/data/files/sixth\\_form/7AC13EAD64FD58E47A4063F7AA192DC2.pdf](https://www.samuelwhitbread.org.uk/site/data/files/sixth_form/7AC13EAD64FD58E47A4063F7AA192DC2.pdf)



## Sixth Form Super Curricular Menu



### Aiming for the Top and Aspiring High

As a Sixth Form student, aiming high and aspiring for the best grades possible is a key element of you opening as many future options, pathways and destinations as possible. Below outlines and signposts all of the super curricular opportunities you should be dipping in to during your time in the Sixth Form. These are activities that enable you to study your subject further, beyond which your teachers have taught you or what you have completed for homework. You may go into more depth on something you picked up in the classroom or learn about a new topic altogether.



SCAN ME

# Independent Study – you BUY your grades in terms of time

Hours of Independent study per week	percentage of students in year 13 last year		
0-4	3%	3	E grades
4-8	11%	14	
8-12	21%	35	D & C grades
12-16	25%	60	
16-20	11%	71	B grades
20+	28%	99	A & A* grades



# VESPA

**Vision:** How well do you know what you want to achieve?

**Effort:** How many hours of independent work do you do?

**Systems:** How do you organise your learning and organise your time?

**Practice:** What kind of work do you do to practice your skills?

**Attitude:** How do you respond to setbacks?



# Sixth Form Enrichment



Mrs Jackman

Head of Sixth Form Enrichment



# What is enrichment?



Your opportunity to develop skills and knowledge that sets you apart from other students when you leave

To undertake a project or experience something outside your A Level subjects

A chance to 'give back' to your community or school

**Every 6<sup>th</sup> form student at SWA completes one enrichment in year 12**

# Enrichment Options



Rugby

Netball

Football

GCSE Maths/English retake

Further Maths

Mathematical studies

EPQ

- The Society
- Eco Committee
- T4T
- MOOC's
- NCS
- DofE
- Subject Ambassadors
- Youth Ambassadors
- Plus others

# EPQ



- Worth half an A Level
- 3 hours per fortnight timetabled
- 5000 word essay or product +1000 essay
- Logbook (diary)
- Pick anything you want to research
- Focus is on skills development e.g. analysis, independent learning, research, time management
- Some universities make alternative offers and/ or grants
- “What impact did the one child policy have on women in China?”
- “How important were Blacksmiths in helping ancient Rome thrive and conquer?”
- “Should the US budget include funds for space exploration or should private corporations take on this role?”
- “Is laughter contagious?”



# How to select enrichment?

- Some of you have already selected your enrichment (Rugby, Further Maths, EPQ etc)
- For everyone else:
  - We will host an enrichment fair in September
  - You must sign up to one enrichment
  - You will then be invited to join the google classroom where all communication will be made/ resources uploaded
  - You will also need to upload resources for some of the courses
  - Enrichment will begin towards the end of September – don't panic if it doesn't start immediately!

# Work Experience



In July, students in year 12 complete one week's work experience. More information will be released in September regarding this but start thinking about where you might like to go.

Popular placements in media, law, museums go quickly so please check when their deadlines are.

# Any questions about enrichment?

Please email me [RJackman@bestacademies.org.uk](mailto:RJackman@bestacademies.org.uk)

[LHuckle@bestacademies.org.uk](mailto:LHuckle@bestacademies.org.uk)

August onwards



# Bursary and Dress Code



Mrs Hoad

Assistant Head of Sixth Form





# Bursary



- You can apply for bursary during your time with us. It is ideal to support your studies e.g. cost of learning materials, equipment for school e.g. your own chromebook, cost of school transport £££
- First deadline is September 2024 – you can apply as soon as you arrive with us in September
- Spend the money! E.g. Amazon order into Miss L Collins

## **Qualifying example reasons – N.B. evidence is required with the application:**

- Learner received free school meals
- Learner has a long term medical condition which affects study
- Learner is a young carer
- Young person in care or a care leaver
- A disabled young person
- Parents/carers are receiving benefits such as income based job seekers allowance, child tax credits, state pension credit, universal credit

# SWA Sixth Form Professional Dress Code



- Dressing appropriately for this **workplace**
- Education and training
- ‘Would Mrs Hoad or Mr Tonking wear this?’

## Key points:

- SWA branded sports kit
- Hoodies/t-shirts/logos
- Footwear: safety e.g. trainers yes Birkenstocks/crocs - no

## Safeguarding: Lanyards

**Sanction: B1** and two B1s in a week = **Sixth Form Penalty Hour 3pm**  
**Thursday**



# Dress code - Affordability

- Capsule wardrobe – e.g. two pairs of trousers, 5 polo shirts, 2 jumpers
- Charity shops and online thrift/reuse sites e.g. Vinted
- And you are welcome to ask in September before you buy anything or before you take the tags off!



# Advice from our students:

- Use your **free periods** wisely to get work done
- **BTECs** are useful – do consider them
- #wishiddoneaBTEC
- Check the **university entry requirements** if you are thinking about a specific degree
- Keep an eye on apprenticeships on offer
- Keep **options open** - it's interesting what degrees do NOT ask for e.g. Law
- Carry on with hobbies/interests out of school - **work/life balance**

# And finally....



No subject choice changes will be processed until after your confirmation email  
24th August

- All the subject sessions from today will be posted to our website
- GCSE Results day: Thursday 22nd August

**Letter with instructions: Confirmation email: By 12pm Friday 23rd August with your subject choices – remember – entry requirements**

**We check every single application!**

**Tuesday 3rd September: Invitation only Checking day - any remaining queries/entries**

**Friday 6th September 8.20am Main Hall**